



NEV SERIES INDOOR FIXED LED DISPLAY

NEV SERIES NEV016 / NEV019 / NEV026 / NEV029 / NEV039



NEW INDOOR FIXED LED CABINET

NEV series product is Leyard's latest high-end indoor fixed installation LED Display that fits for various application, including commercial retail, indoor advertising, sports venues, etc.

KEY FEATURES



HDR Ready



3840Hz High Refresh Rate



Corner Protection



Various Pitches



Quick Lock



Ultra-thin



Flexible Stacking Height



Right-angle Installation



Front/Rear Maintenance

FIT THE SPACE

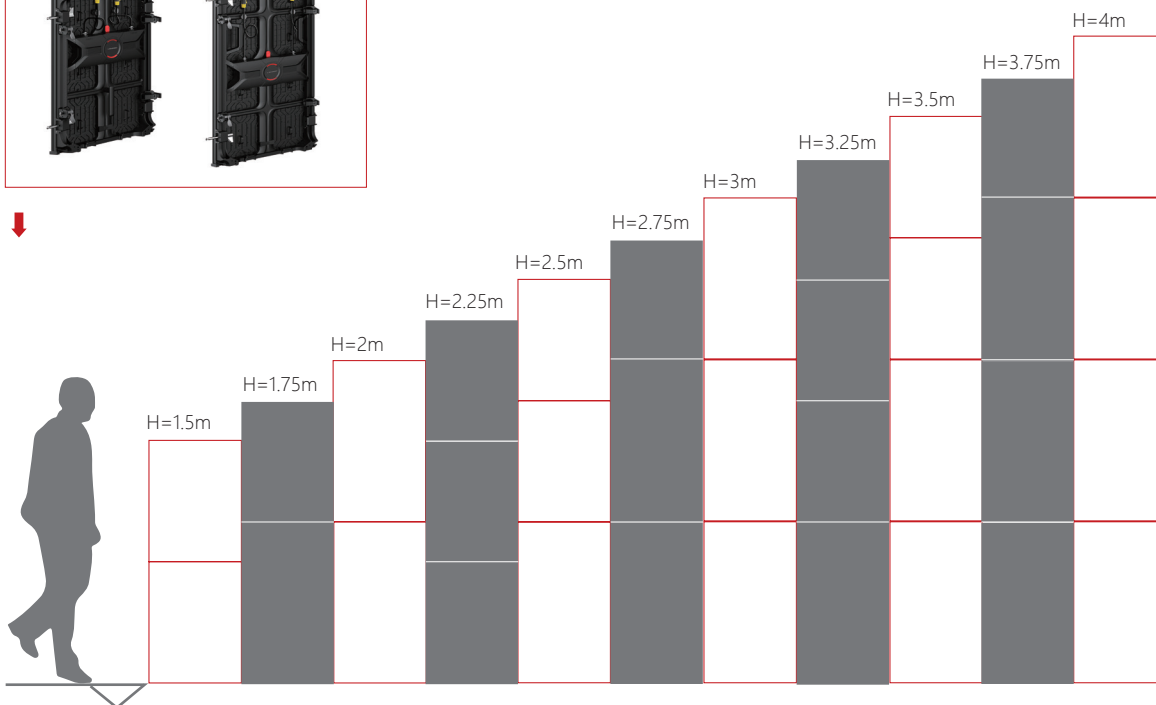
NEV has two options for cabinet height, by mixing up the cabinets into the screen, the screen heights are in 250mm steps. The cabinet depth is just 68mm to guarantee the screen is in a slim shape. NEV ideally fits the space.

SIZE

0.5x0.75m



0.5x1.0m

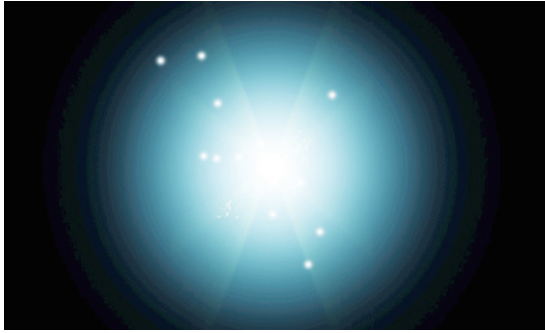


TECHNOLOGY ADVANTAGES



High Brightness

Meet the need for a brighter environment.



High Brightness



Standard Brightness



High Dynamic Range(Optional)

Support HDR function to meet more display requirements.





High Refresh Rate

Thanks to the very high refresh rate, the image is very stable under the cameras.



Corner Protection & Quick Lock

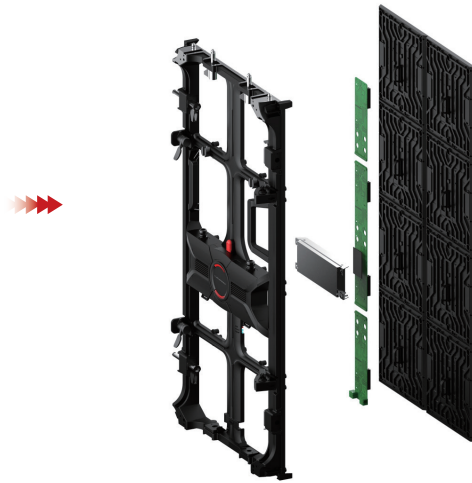
The corner protection of the cabinet makes it possible to protect the screen during handling and avoid damage to LED lamps. The fast lock reduces the installation time while keeps the alignment in a high level standard.





Modular Design

The components of all models of NEV series are the same, including the back cover, power board, wire, except for LED module, it helps quality control of the products.



Highly Integrated Design

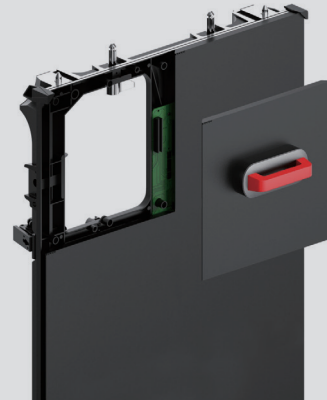
Handsome back "flip" design with integrated power and receiving card for easy repair and replacement.





Front/Rear to Installation/Maintenance

- > NEV cabinet is front and rear accessible, for easier maintenance.
- > NEV cabinet is designed in a smart way that the mechanical structure supports both the front and rear installation.



Right-angle Installation

Considering the use of corners, the cabinet is designed to stitch out a seamless 90 degree corner screen.



APPLICATIONS



SPECIFICATION

Item	NEV016		NEV019		NEV026		NEV029		NEV039	
LED configuration	SMD		SMD		SMD		SMD		SMD	
Physical pixel pitch(mm)	1.602		1.953		2.604		2.976		3.906	
Module resolution(WxH)	156x156		128x128		96x96		84x84		64x64	
Module dimension(WxH, mm)	250x250									
Module composition(WxH)	2x4	2x3	2x4	2x3	2x4	2x3	2x4	2x3	2x4	2x3
Cabinet resolution(WxH)	312x624	312x468	256x512	256x384	192x384	192x288	168x336	168x252	128x256	128x192
Cabinet dimension(WxHxD, mm)	500x1000x68	500x750x68	500x1000x68	500x750x68	500x1000x68	500x750x68	500x1000x68	500x750x68	500x1000x68	500x750x68
Cabinet area(m ²)	0.5	0.375	0.5	0.375	0.5	0.375	0.5	0.375	0.5	0.375
Weight (kg/cabinet; kg/m ²)	12; 24	10; 27	12; 24	10; 27	12; 24	10; 27	12; 24	10; 27	12; 24	10; 27
Pixel density(Point/m ²)	389376		262144		147456		112896		65536	
IP Level	IP30									
Brightness (nits)	800				1000					
Color temperature(K)	3000 —10000									
Viewing angle (horiz; vert) °	160; 140									
Central distance deviation of luminescence point	<3%									
Contrast ratio	5000:1									
Power consumption(max; avg)W/m ²	650; 216		520; 175		410; 136		400; 132		350; 116	
Input voltage(V)	AC100~240V(50~60Hz)									
Maintenance	Front / Rear Access									
Refresh rate @60Hz	> 3840									
Frame rate Processing(Hz)	50&60									
Operating temperature(°C)	-20—40									
Storage temperature(°C)	-30—60									
Operating humidity(RH)	10 – 90%									
Storage humidity (RH)	10 – 80%									

Remark: Above data is subject to change without prior notice



LEYARD
STOCK CODE: 300296

SHENZHEN LEYARD OPTO-ELECTRONIC CO., LTD

ADD: Block 2/3/4, Jia'AnDa Industrial Park, Dalang, Longhua, Shenzhen, 518109, China.

Tel: +86-755-2819-7999 / Fax: +86-755-29671239

Email: intlmarketing@leyard.com / Website: sz.leyard.com